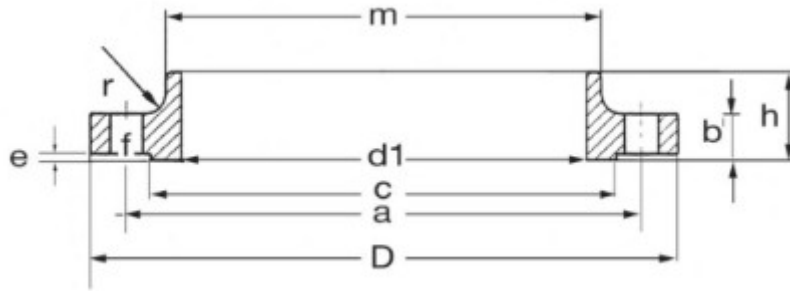




**SIRIO**  
WATER SOLUTION - SINCE 1990

**FLANGE FILETTATE A COLLARE EN 1092-1 PN 10 / 16**



**EN 1092-1**

DN = d <sub>1</sub>	D	b	h	m	c	e	r	f	a	VTI	N. FORI	Kg.
10 3/8" gas	90	16	22	30	40	2	4	14	60	M12	4	0,5
15 1/2" gas	95	16	22	35	45	2	4	14	65	M12	4	0,5
20 1/2" gas	105	18	26	45	58	2	4	14	75	M12	4	1,0
25 1" gas	115	18	28	52	68	2	4	14	85	M12	4	1,5
32 1 1/2" gas	140	18	30	60	78	2	6	18	100	M16	4	2,0
40 1 1/2" gas	150	18	32	70	88	3	6	18	110	M16	4	2,0
50 2" gas	165	18	28	84	102	3	6	18	125	M16	4	3,0
65 2 1/2" gas	185	18	32	104	122	3	6	18	145	M16	8	3,0
80 3" gas	200	20	34	118	138	3	6	18	160	M16	8	4,0
100 4" gas	220	20	40	140	158	3	8	18	180	M16	8	4,5
125 5" gas	250	22	44	168	188	3	8	18	210	M16	8	6,5
150 6" gas	285	22	44	195	212	3	10	22	240	M20	8	7,5

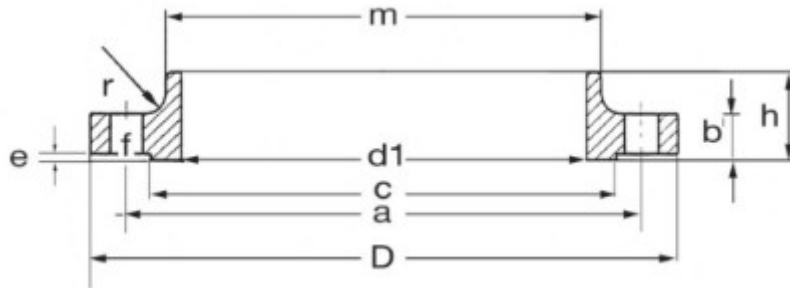


**SIRIO**  
WATER SOLUTION - SINCE 1990



**SIRIO**  
WATER SOLUTION - SINCE 1990

**FLANGE FILETTATE A COLLARE EN 1092-1 PN 40**



**EN 1092-1**

DN = d <sub>1</sub>	D	b	h	m	c	e	r	f	a	VTI	N. FORI	Kg.
10 3/8" gas	90	16	22	30	40	2	4	14	60	M12	4	0,5
15 1/2" gas	95	16	22	35	45	2	4	14	65	M12	4	0,5
20 3/4" gas	105	18	26	45	58	2	4	14	75	M12	4	1,0
25 1" gas	115	18	28	52	68	2	4	14	85	M12	4	1,5
32 1 1/4" gas	140	18	30	60	78	2	6	18	100	M16	4	2,0
40 1 1/2" gas	150	18	32	70	88	3	6	18	110	M16	4	2,0
50 2" gas	165	20	34	84	102	3	6	18	125	M16	4	3,0
65 2 1/2" gas	185	22	38	104	122	3	6	18	145	M16	8	4,0
80 3" gas	200	24	40	118	138	3	8	18	160	M16	8	4,5
100 4" gas	235	24	44	145	162	3	8	22	190	M20	8	6,5
125 5" gas	270	26	48	170	188	3	8	26	220	M24	8	8,5
150 6" gas	300	28	52	200	218	3	10	26	250	M24	8	11,0

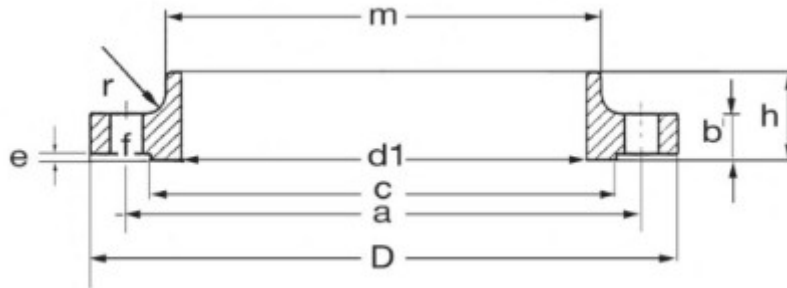


**SIRIO**  
WATER SOLUTION - SINCE 1990



**SIRIO**  
WATER SOLUTION - SINCE 1990

**FLANGE FILETTATE A COLLARE EN 1092-1 PN 63**



**EN 1092-1**

DN = d <sub>1</sub>	D	b	h	m	c	e	r	f	a	VITI	N. FORI	Kg.
10 3/8" gas	100	20	28	40	40	2	4	14	70	M12	4	1,0
15 1/2" gas	105	20	28	43	45	2	4	14	75	M12	4	1,0
20 3/4" gas	130	22	30	52	58	2	4	18	90	M16	4	2,0
25 1" gas	140	24	32	60	68	2	4	18	100	M16	4	2,5
32 1 1/4" gas	155	24	32	68	78	2	6	22	110	M20	4	3,0
40 1 1/2" gas	170	26	34	80	88	3	6	22	125	M20	4	4,0
50 2" gas	180	26	36	90	102	3	6	22	135	M20	4	4,5
65 2 1/2" gas	205	26	40	112	122	3	6	22	160	M20	8	5,5
80 3" gas	215	28	44	125	138	3	8	22	170	M20	8	6,5
100 4" gas	250	30	52	152	162	3	8	26	200	M24	8	9,0
125 5" gas	295	34	56	185	188	3	8	30	240	M27	8	14,0
150 6" gas	345	36	60	215	218	3	10	33	280	M30	8	20,0



**SIRIO**  
WATER SOLUTION - SINCE 1990